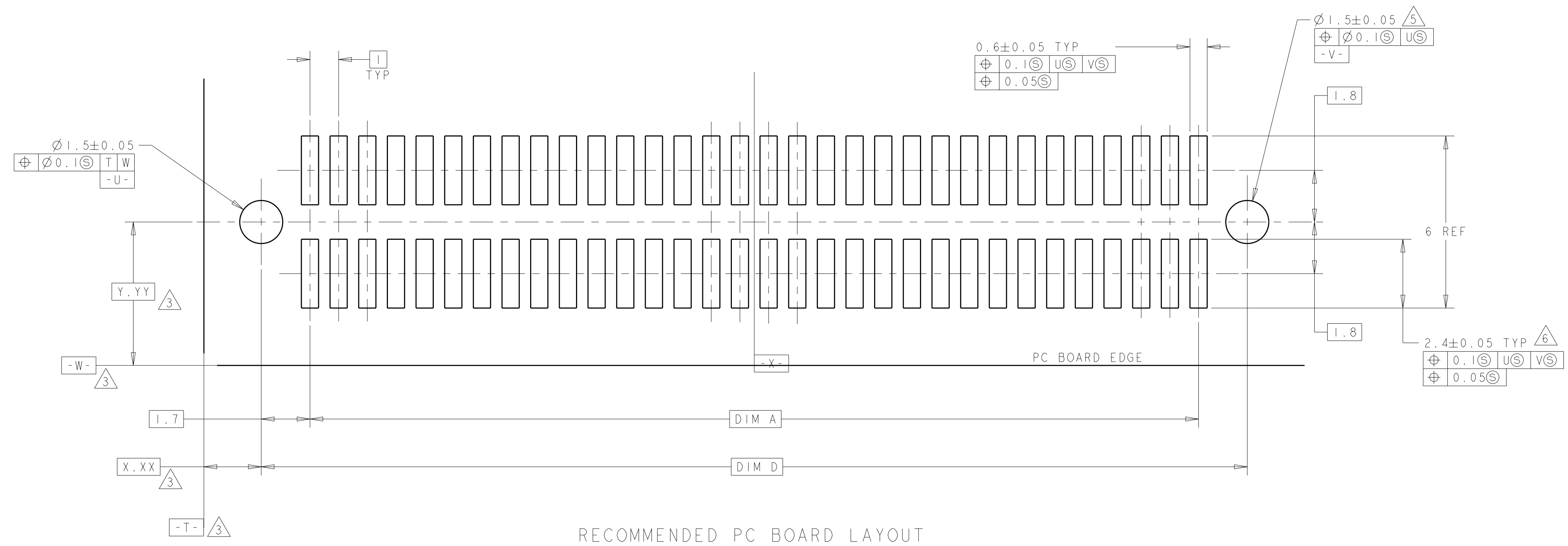
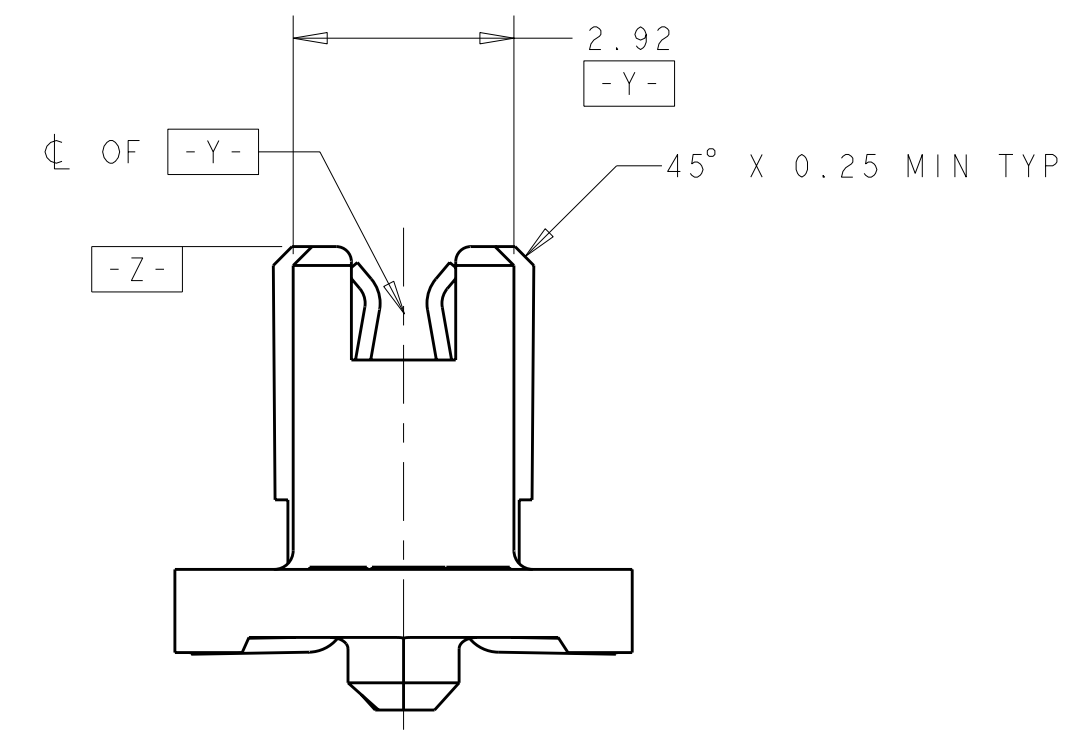
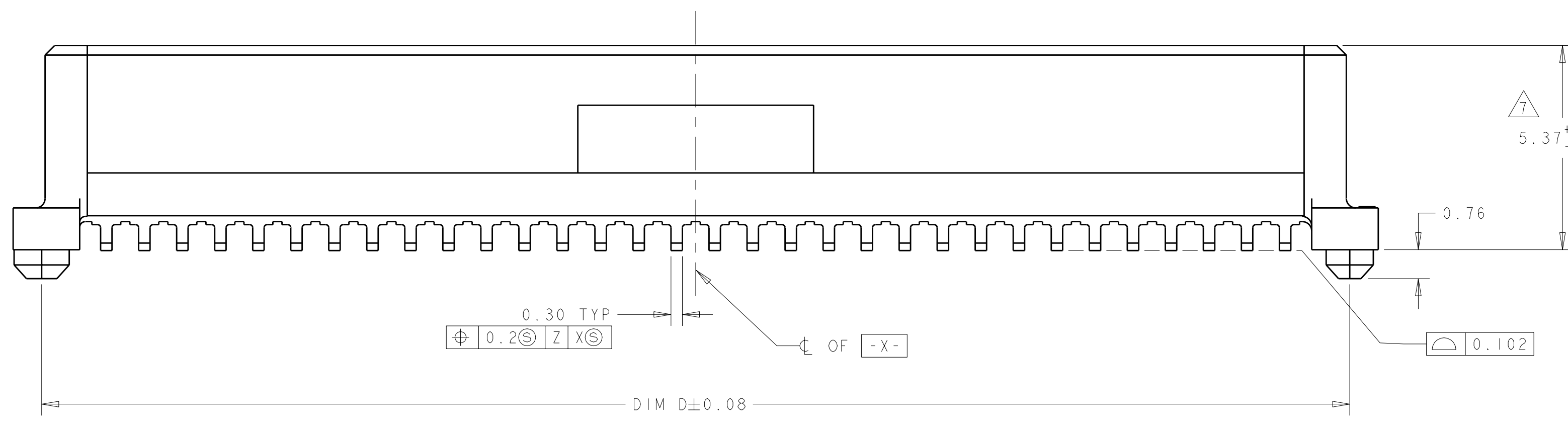
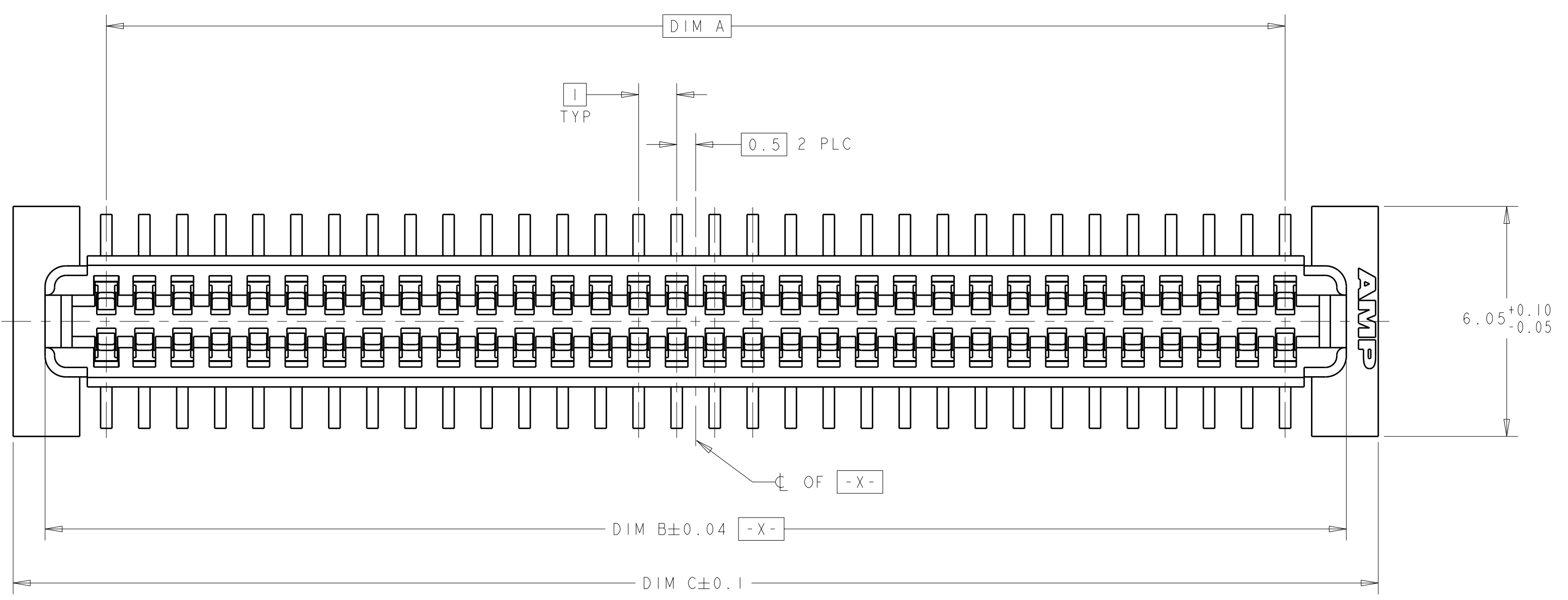


LOC	DIST	REV	DATE	BY	CHK	APPD
AD	00	0	29SEP2004	BC	RW	
		A	10JUL2006	DH	DB	



RECOMMENDED PC BOARD LAYOUT

- 1 HOUSING MATERIAL: HIGH TEMPERATURE THERMOPLASTIC, COLOR; BLACK. CONTACT MATERIAL: PHOSPHOR BRONZE.
- 2 CONTACT FINISH: NICKEL UNDERPLATE ALL OVER, MATING SURFACES PLATED TO MEET PLI PERFORMANCE REQUIREMENTS OF INDUSTRY SPECIFICATION EIA-700AAAB, SOLDER TAILS PLATED TIN.
- 3 DATUM LOCATIONS AND BASIC DIMENSIONS TO BE ESTABLISHED BY THE CUSTOMER. CONSULT AMP ENGINEERING WHEN PLACING MULTIPLE CONNECTORS ON A PC BOARD.
- 4. PACKAGED IN TAPE ON REEL PER EIA-481.
- 5 1.5 ± 0.05 DIAMETER HOLE SHOULD BE USED IF PLACED ON PCB WITH VACUUM PLACEMENT EQUIPMENT.
- 6 SHORTER SOLDER LANDS MAY BE USED PER EIA 700AAAB, HOWEVER 2.4 LENGTH ASSURES OPTIMUM SOLDER FILLET REGARDLESS OF MANUFACTURER OF CONNECTOR.
- 7 REFERRED TO AS DIM H = 5.30 ± 0.1 IN EIA700AAAB SPECIFICATION.
- 8 CONTACT FINISH: 0.00381 MINIMUM MATTE TIN PER ASTM B 545 ON SOLDER AREA, 0.00127 MINIMUM GOLD PER ASTM B 488 ON MATING AREA, BOTH OVER 0.00127 MINIMUM NICKEL PER SAE-AMS-QQ-N-290 ON ENTIRE CONTACT

FINISH	DIM D	DIM C	DIM B	DIM A	MATING CONNECTOR	STACK HGTS	POS	PART NO
8	44.4	45.9	44.22	41	5120527-2	10	84	1-5120521-2
8	44.4	45.9	44.22	41	5120526-2	9	84	1-5120521-2
8	44.4	45.9	44.22	41	5120525-2	8	84	1-5120521-2
8	34.4	35.9	34.22	31	5120527-1	10	64	1-5120521-1
8	34.4	35.9	34.22	31	5120526-1	9	64	1-5120521-1
8	34.4	35.9	34.22	31	5120525-1	8	64	1-5120521-1
2	44.4	45.9	44.22	41	5120527-2	10	84	5120521-2
2	44.4	45.9	44.22	41	5120526-2	9	84	5120521-2
2	44.4	45.9	44.22	41	5120525-2	8	84	5120521-2
2	34.4	35.9	34.22	31	5120527-1	10	64	5120521-1
2	34.4	35.9	34.22	31	5120526-1	9	64	5120521-1
2	34.4	35.9	34.22	31	5120525-1	8	64	5120521-1

DIMENSIONS: mm TOLERANCES UNLESS OTHERWISE SPECIFIED: 9 PLC ± 5 PLC ±0.03 4 PLC ±0.003 ANGLES ±0°-1° FINISH SEE TABLE		DIMENSIONS: mm TOLERANCES UNLESS OTHERWISE SPECIFIED: 9 PLC ± 5 PLC ±0.03 4 PLC ±0.003 ANGLES ±0°-1° FINISH SEE TABLE		DIMENSIONS: mm TOLERANCES UNLESS OTHERWISE SPECIFIED: 9 PLC ± 5 PLC ±0.03 4 PLC ±0.003 ANGLES ±0°-1° FINISH SEE TABLE		DIMENSIONS: mm TOLERANCES UNLESS OTHERWISE SPECIFIED: 9 PLC ± 5 PLC ±0.03 4 PLC ±0.003 ANGLES ±0°-1° FINISH SEE TABLE		DIMENSIONS: mm TOLERANCES UNLESS OTHERWISE SPECIFIED: 9 PLC ± 5 PLC ±0.03 4 PLC ±0.003 ANGLES ±0°-1° FINISH SEE TABLE	
MATERIAL: SEE TABLE		WEIGHT: -		CUSTOMER DRAWING		SCALE: 10:1		SHEET 1 OF 1	